

„Easter Egg Benni“

eBook from stephankie-dreams.com



sewing instructions, sewing pattern and
files in the formats dxf,svg,png and jpg

Copyright for the "Easter Egg Benni" by Stephanie Müller, Stephankie-Dreams, February 2023.
Finished pieces made using this pattern and file may be sold without quantity limitations. However,
the creator of the pattern or file (Easter Egg "Benni" by Stephankie-Dreams) must be credited in
the description. Mass production, publication of the eBook, the file, or any parts thereof is strictly
prohibited.

contens

important links	3
who is behind Stephankie-Dreams	4
easter egg Benni	5
sewing terms	6
instructions for printing	8
required materials	10
material consumption	11
sewing instructions easter egg Benni	12
sewing pattern	18

Stephankie-Dreams

No liability is assumed for any errors in the instructions

important links

Thank you for choosing an eBook from *Stephankie-Dreams*.

Stephankie-Dreams eBooks contain many pictures and are described in great detail, so even beginners can achieve beautiful sewing results with these instructions.

Every idea that comes to my mind is lovingly developed by hand, thoroughly tested, and repeatedly sewn until everything fits perfectly.

I am happy to answer your wishes and questions about sewing at

info@stephankie-dreams.de

You can find all the news on Facebook ([Stephankie-Dreams](#))
and on Instagram ([#stephankiedreamsde](#))

Stephankie-Dreams

No liability is assumed for any errors in the instructions

Who is behind Stephankie-Dreams



Many years ago, creating patterns was not even a consideration. I've always enjoyed being creative. Slowly but surely, I continued to develop my skills. During my first training, I came into contact with a sewing machine for the first time and found pleasure in using it. My first attempts were homemade carnival costumes for my two children. They had such unique requests that I simply had to take matters into my own hands. But it was only years later, when I held a piece of jersey fabric in my hands, that I fell head over heels in love with this material. Jersey is so versatile and so comfortable to wear.

So, I began sewing everyday clothing for the children in my family. I enjoyed it so much that I started to build my company, Stephankie-Dreams, to sell handcrafted products. With every piece I produced, I learned more and more, and new ideas for products kept popping into my head, which I put on paper and brought to life. Eventually, I wanted to share my experiences and ideas with others and began creating my own patterns.

With eBooks from Stephankie-Dreams, I now want to reach many people who want to learn the craft of sewing. I hope that it sparks a passion for sewing in some, as the joy of every handmade piece is indescribable.

So now, I wish you all a lot of fun and success in sewing.

Yours, Stephanie

Stephankie-Dreams

No liability is assumed for any errors in the instructions

easter egg Benni

At Easter, it is a tradition to hide eggs and sweets, and wouldn't it be great to have the perfect packaging for them? The Easter egg Benni is perfect for hiding small treats like candies or little gifts. With its adorable bunny face, it also makes a wonderful gift. The finished Easter egg has a size of 6,10 in x 7,68 in.

The egg is sewn from cotton fabrics.

Finished pieces made using this pattern and file may be sold without quantity limitations. However, the creator of the pattern or file (Easter Egg "Benni" by Stephankie-Dreams) must be credited in the description. Mass production, publication of the eBook, the file, or any parts thereof is strictly prohibited.



Stephankie-Dreams

No liability is assumed for any errors in the instructions

sewing terms

seam allowance = When cutting pattern pieces, a seam allowance of approximately 3/8 in is often added. This ensures that the garment will not be tighter than it should be when sewn.

trim seam allowance = This refers to trimming the seam allowance after sewing. This makes the seams flatter.

to clip = For corners or curves, small notches are made in the seam allowance after sewing, so that the seam lies flat and the corner can be properly pushed out after turning.

seam lock = To prevent the seam from coming undone, a few stitches must be sewn forward and backward at the beginning and end of each seam.

right fabric side = The right side of the fabric is the more attractive side and should be used as the outer side.

left fabric side = The left side should be used as the inner fabric side. It is the less attractive side of the fabric.

grainline = This refers to the fabric grainline that must be observed when cutting pattern pieces.

presser foot width = The fabric is guided along the edge of the presser foot during sewing.

apply = Sew on appliqués using a zigzag stitch (stitch width 3.5 and stitch length 0.9). Use thread that matches each appliqué's color.

edgestitch = Here, sew close to the edge of the fabric.

running stitch = Here, sew over an edge to additionally stabilize it.

curl = The creation of gathers.

right sides together = Here, two pattern pieces are placed together with the right sides facing each other. The less attractive side is therefore on the outside.

Stephankie-Dreams

No liability is assumed for any errors in the instructions

finish = Here, a zigzag stitch is used to sew over the fabric edges to prevent fraying and/or to sew them together at the same time.

fold = The pattern is placed once with the writing facing up on the fabric, and once mirrored along the fold edge on the fabric.

Please read the instructions carefully before you start sewing, as this will answer most questions in advance.

A seam allowance of 3/8 in is already included in the pattern.

Unless otherwise stated, always sew with a presser foot width.

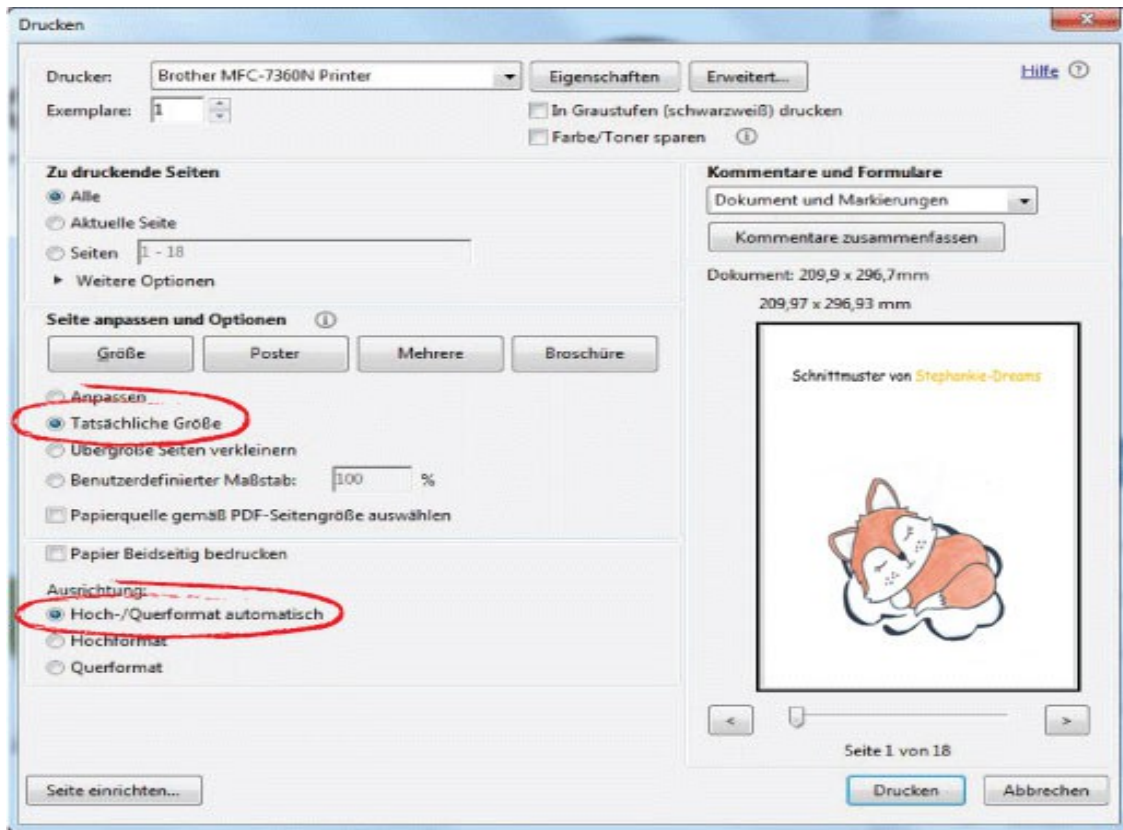
Stephankie-Dreams

No liability is assumed for any errors in the instructions

instructions for printing

tip:

Print only the pattern in black and white to save costs and be environmentally friendly. The instructions are easy to read on screen.



The following print settings must be configured:

Pages to print:

Select the Pages setting and enter the specific page numbers you need in the designated field.

Size:

Choose Actual Size.

Orientation:

Select Automatic Portrait/Landscape.

Stephankie-Dreams

No liability is assumed for any errors in the instructions

required materials



- sewing machine
- needle universal
- iron
- scissors, pins or fabric clips, pen
- pattern
- thread in various colors, matching the selected fabrics
- plotter

Stephankie-Dreams

No liability is assumed for any errors in the instructions

material consumption

material	consumption
fabric	ca. 20 in x 7 in
flex film	ca. 7 in x 5,5 in

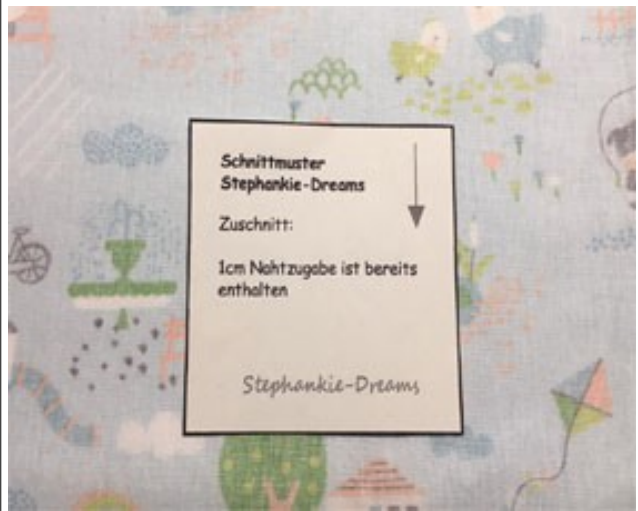
Stephankie-Dreams

No liability is assumed for any errors in the instructions

sewing instructions easter egg Benni



First, cut out all required pattern pieces from fabric. Then, press all fabric pieces.



The pattern is placed with the writing facing up on the left side of the fabric. Mirror image means the writing is on the fabric side. Here too, it is placed on the left side of the fabric.

Important before you cut the designs with a plotter.

Each design has a bounding frame around it. This frame must be resized accordingly to ensure the design fits properly on the Easter egg. Once the frame is set to the correct size, you can separate the design into individual parts.

To do this, select the design, go to the Object tab, and choose Release Compound Path. Now, all elements are separate, and you can cut them in different colors. However, be careful not to change the size of individual pieces.

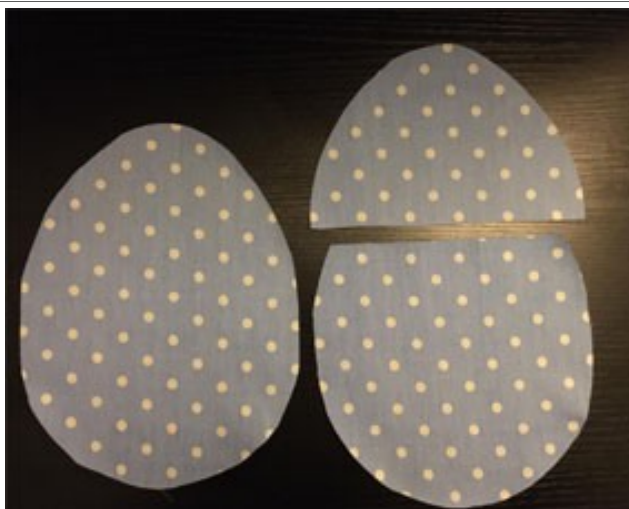
Remember to mirror your design if you are cutting it from heat transfer vinyl (HTV). Also, don't forget to weed your design before pressing it onto the fabric.

The bounding frame for the bunny face must be 3,94 in x 3,94 in.

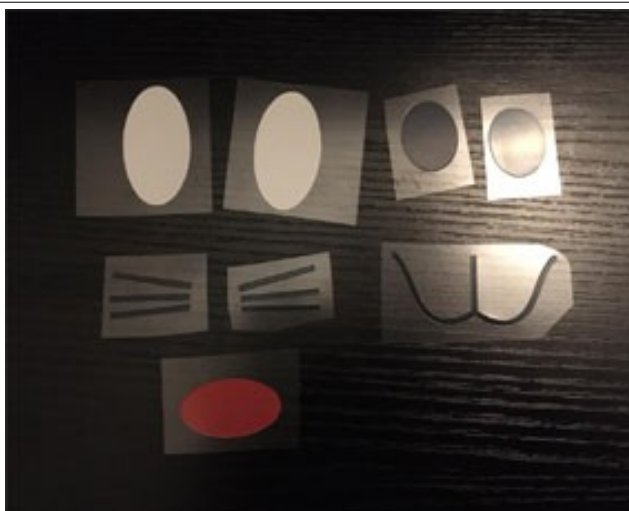
Stephankie-Dreams

No liability is assumed for any errors in the instructions

You now have the following pattern pieces :



from fabric:
egg outside, 1x
egg above, 1x
egg below, 1x



from flex film:
eyes outside in white, 2x
eyes inside in black, 2x
mouth in black, 1x
whiskers on the right in black, 1x
whiskers on the left in black, 1x
nose in red, 1x

Stephankie-Dreams

No liability is assumed for any errors in the instructions

make from the easter egg



The bunny face is ironed onto the outer egg pattern piece. First, apply the outer eyes and the nose.



Next, iron on the inner eyes, whiskers, and mouth. Please make sure to place baking paper over the foil to prevent the already applied designs from melting.



Now you need the pattern pieces Top Egg and Bottom Egg.

Stephankie-Dreams

No liability is assumed for any errors in the instructions



These pieces are finished along the top edge. Use a zigzag stitch if sewing with a regular sewing machine, or serge the edge with an overlock machine.



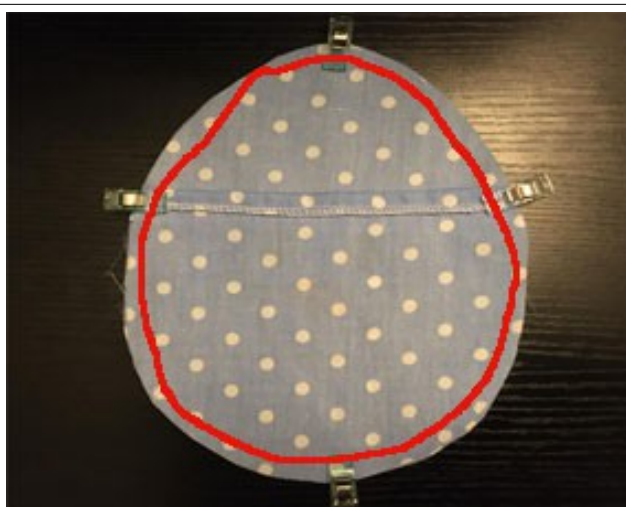
Now fold the finished edge of the bottom Easter egg $\frac{3}{8}$ in inward and topstitch it close to the edge along the marking.



Do the same with the finished edge of the top Easter egg.



Now place the top egg onto the outer egg and pin them together. Both pieces should be placed right sides together.



Next, place the bottom egg on top and pin it again. Once again, the fabrics should be right sides together. Sew everything along the marking.



The egg is now sewn together.



To prevent the edges from fraying, finish the edge all around with a zigzag stitch. You can also use the overlock machine to finish the edge.



If you've made it this far, you can be happy. Your easter egg is finished.

Sewing Pattern Easter Egg "Benni"

Control Square

2 in x 2 in

pattern pieces for easter egg



= grainline

easter egg Benni
egg outside

cut 1x fabric

3/8 in seam allowance included



Stephankie-Dreams

**easter egg Benni
egg above**

cut 1x fabric

3/8 in seam allowance included



Stephankie-Dreams

**easter egg Benni
egg below**

cut 1x fabric

3/8 in seam allowance included



Stephankie-Dreams